

gtz Partner for Participation

WELCOME

Inclusive Development of the Economy (INCLUDE)

July 2008 – December 2011

gtz Partner for Participation **INCLUDE**

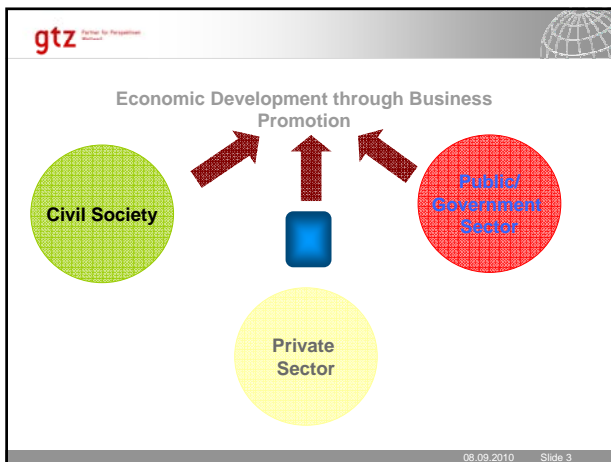
Government of Nepal objective is to bring along change to the lives of the general public by supporting the **establishment of peace and reducing unemployment, poverty and inequality** in the country.

Project rationale is to contribute to the Government's objective by creating employment and income opportunities for disadvantaged and excluded groups

Representatives of the private sector, the public sector and the civil society contribute to a more equitable economy in selected areas

<p>Dialogue between Civil Society, Private Sector and the Government for Peacebuilding</p> <p>Private and public sector representatives on national level create a conducive environment for local economic development, and peace</p>	<p>Local and Regional Economic Development (LRED)</p> <p>Local entrepreneurs and cooperatives invest in viable and sustainable business opportunities</p>	<p>Access to Financial Services to Micro, Small and Medium Enterprises</p> <p>Local entrepreneurs and excluded / disadvantaged groups have better access to sustainable financial services</p>
---	--	---

08.09.2010 Slide 2



gtz Partner for Participation

Program Goal

The framework conditions are improved to achieve a socially balanced and equitable economic development in selected regions.

Main areas of thrust:

- Local and regional economic development (LRED)
- Business promotion/entrepreneurship development
- Employment generation/income increment
- Peace building
- Social inclusion

08.09.2010 Slide 4

gtz Partner for Participation **INCLUDE**

Expected results

- Decrease in unemployment and/or underemployment amongst different groups, particularly women, youth, ethnic minorities (and/or lower castes), in the selected locations/regions
- Increase in household income of disadvantaged families in the selected sectors of the selected locations/regions
- Positive trends in new business opportunities, new employment opportunities, availability of financial services for MSME, availability of other relevant services for MSME and decrease of 'red tape' and other administrative obstacles for businesses as well as engagement of the private sector for social activities

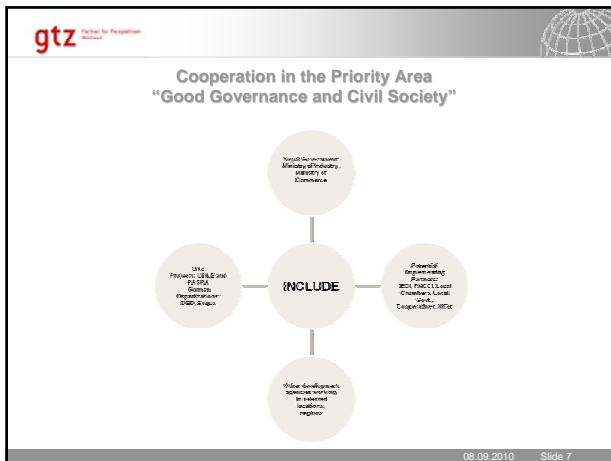
08.09.2010 Slide 5

gtz Partner for Participation

Possible activities

- Supporting or encouraging collaboration between public, private and civil societies through facilitating dialogue
- Promoting entrepreneurship – i.e. skill enhancing through training and capacity building measures
- Strengthening value chain, particularly aimed at market linkage for subsectors such as orthodox tea, organic coffee, honey, herbs and Nepalese Lokta paper (handmade)
- Providing access to finance
- Providing incentives and support to get access to emerging technologies

08.09.2010 Slide 6



- gtz Partner for Participation
- ### Possible overlap with current and planned activities
- Subsector Value Chains: Organic Orthodox Tea, Organic Coffee, Handmade Paper, Herbs, Honey (branding products, GI, etc.)
 - SAARC – Trade Information Project
 - WTO Trade Policy and Promotion Project
 - PTB – Support to Nepal in the field of quality infrastructure
 - PPP – Private Public Partnerships (Organic tea production, GTE)
- 08.09.2010 Slide 8

- gtz Partner for Participation
- ### Support for WTO Trade Policy and Promotion in Nepal
- Strategy through following components:
- Capacity Building through Training: Related to WTO and Trade and Implementation of WTO Commitments
 - Capacity Building through Direct Support of the Implementation of Nepal's WTO Commitments
 - Capacity building through development of studies and exchange of trade related dialogues with relevant institutions
- 08.09.2010 Slide 9

- gtz Partner for Participation
- ### Partnerships in Biotrade Project
- Ministry of Commerce
 - Department of Food Technology and Quality Control, Ministry of Agriculture
 - Commodity associations
- 08.09.2010 Slide 10

- gtz Partner for Participation
- ### Expectation from Biotrade Project
- TBT (Quality and organic product standard certification procedures)
 - GI
 - Branding quality standards/logo registration procedures for high value products in EU
- 08.09.2010 Slide 11

gtz Partner for Participation

Thank You!!!

08.09.2010 Slide 12



The INCLUDE process in a nutshell...

- **Step 1:** The intervention starts with the preliminary analysis of the location/region and the relevant stakeholders.
- **Step 2:** INCLUDE team facilitates in structuring the needs of the stakeholders to make a clear cut and well accepted overall vision for the region.
- **Step 3:** Identify sectors which are relevant and have potential in achieving the set vision where demand and supply, relevance of the sector, institutional and financial capacity is analyzed and considered.
- **Step 4:** Incorporate the vision of the region into the implementing partners' agenda.
- **Step 5:** Plan interventions in the identified sectors where activities eligibility criteria are also considered.
- **Step 6:** Implement activities in a participatory manner.
- **Step 7:** Monitor and supervise the whole process