

Session 3: Developing Review Focus and Methodology



Objective

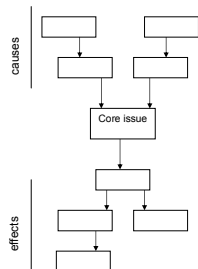
- To consolidate a relevant review focus and practical methodology through stakeholder participation (to ensure shared sense of concerns, legitimacy and involvement)

1st Stakeholder workshop:
 what are the challenges?
 what is to be reviewed?
 what constitutes an answer?
 where to look for the answer?



Determining the review focus

- Brainstorming of "issues"
- Collective analysis of issues/problems
- Issue/ policy comparison: What are the key areas of concern?
- Selecting measure(s) for in-depth assessment



Developing questions and indicators

Analytical dimensions	questions	indicators
Relevance	A B	A ₁ , A ₂ B ₁ , B ₂
Coherence	A B	A ₁ , A ₂ B ₁ , B ₂
Effectiveness	A B	A ₁ , A ₂ B ₁ , B ₂
Chosen policy Measure	Integrated impact assessment	
Environmental impacts	A B	A ₁ , A ₂ B ₁ , B ₂
Social impacts	A B	A ₁ , A ₂ B ₁ , B ₂
Economic impacts	A B	A ₁ , A ₂ B ₁ , B ₂



Determining the field of observation and data collection

- Field of observation: specific species, actors and regions
- Design data collection tools
- Data collection



Developing Questions and Indicators

Hypothetical example: focus on Appendix II species trade regulations

Questions focussed on effectiveness issues
 Questions focussed on Conservation, Social and Economic Impacts

Conservation impact: To what extent have trade regulations of appendix II species had beneficial conservation influence & impact?

Questions	Indicators
To what extent are appendix 2 species populations in better health compared to before the introduction of restrictions?	Population status before/ after (time series/ trend data) Perceptions by experts, conservation NGOs, harvesters and traders regarding the relative impact of regulations in inducing this change compared with other drivers
<i>The question seeks to track the impact on regulations on the species populations as the stakeholder workshop resulted in arguments about whether or not species populations were fairing better</i>	

